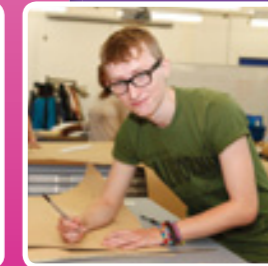


For the latest  
college news and  
to find out more  
about our courses  
visit our website:  
[reading-college.ac.uk](http://reading-college.ac.uk)



Kings Road Reading RG1 4HJ  
**Website:** [reading-college.ac.uk](http://reading-college.ac.uk)

**Course enquiries:** +44 (0)118 955 4300 e-mail: [enquiries@reading-college.ac.uk](mailto:enquiries@reading-college.ac.uk)  
Reading College is a limited company registered in England and Wales  
**Registered address:** Kings Road Reading England RG1 4HJ  
**Registered company no.:** 07253475  
**VAT no.:** 991 293 095 **Registered charity no.:** 1137003



# International Guide 2011-12



# Welcome

## We have a long tradition of teaching international students

"Each year, students come to Reading from around the world, not just because of the great courses and excellent teaching, but because Reading is an ideal base for your studies in the UK.

There are so many reasons why Reading College is ideally suited to welcome students from overseas. We are focused on supporting every student and helping them achieve their individual goals. Our team will enable you to gain the English language skills, as well as the professional skills, knowledge and attitude to boost your future employment chances or study at university. Also, our college is situated in one of the most interesting and dynamic towns in the heart of England, close to London and to many historic sites and a perfect location from which to explore the UK.

You are guaranteed a warm welcome from our experienced staff and fellow students. Your learning takes place in a friendly environment with excellent facilities. You will have plenty of opportunities to make new friends and visit exciting places. Our aim is to ensure students have a happy and rewarding time whilst studying at Reading College.

We look forward to meeting you soon.

Lesley Donoghue  
Principal



# Contents

Welcome.....	2	International Foundation Programme.....	11
Why choose Reading College?.....	3	International Foundation Programme:	
Campus Facilities.....	4	September – July.....	12
Extracurricular Opportunities.....	5	A levels.....	13
Reading Town.....	6	Vocational Qualifications.....	14
Easy Access around the UK.....	7	Support for Students.....	15
Studying in the UK.....	8	Accommodation.....	16
English as a Foreign Language.....	9	Living in the UK.....	17
International English Summer School 2012 for.....	10	Enquiries and Applications.....	18
		Visa Information.....	19

# Why choose Reading College?

## Success starts here

Reading is a vibrant and diverse further education college located west of London, and we welcome international students from all over the world. Many international students come here to study English or to prepare for a degree course. Reading College has approximately 6,500 students. Around 10% of the student population come from overseas. We offer a wide range of courses to international students aged 16 and over, as well as the opportunity to take part in a range of social activities and day trips to destinations across the UK.

### Top 10 reasons why students enjoy studying at Reading College:

1. We offer a good range of courses to suit most interests and career goals.
2. We have a high achievement rate.
3. We have a good history of student progression on to their preferred choice of degree level study or career.
4. There is plenty of academic and personal support whilst studying.
5. Additional English support is available.
6. We offer a well-equipped and modern learning

environment.

7. We are located near London with good transport links and are close to other historical towns such as Windsor, Oxford and Bath.
8. The college is situated in a lively town with a prominent riverside shopping centre 'The Oracle' featuring a range of restaurants as well as a 10 screen cinema.
9. Reading is a safe place to live with a welcoming atmosphere
10. There is the opportunity to meet and mix with English students through study and leisure activities.

## Progression

### International Students from Reading have gone on to study:

- Accounting at Bristol University
- Computing at Winchester University
- Psychology at University of West of England, Bristol
- Physics at Queen Mary University, London
- Architecture at London Metropolitan University
- Economics and Geography at Glasgow University
- Computer Science at King's College, London
- Politics and International Relations at the London School of Economics
- Business at Royal Holloway, London
- Business at Reading University
- Nursing at Oxford Brookes University
- Midwifery at Southampton University
- Engineering at Imperial College London.

# Campus Facilities

We offer a wide range of facilities to students within a comfortable and modern learning environment. On campus we have many facilities allowing students to learn in well-equipped surroundings using the latest technology.

The **Study Zone** gives you access to hardcopy and online resources, space to work privately or in groups and access to computers with free use of the internet.

You also have full use of the **Food Court** serving hot and cold meals and **Coffee Shop**. The college also has a commercial restaurant, **The Kitchen at Reading College**, which serves competitively priced meals prepared and served by students.

**The Salon at Reading College** is the commercial hair and therapy salon open to the public, staff and students.

**Blast 1386 Radio Station** is located on campus and provides an opportunity for students to gain broadcasting skills.

**Specialist industry standard facilities** are available for students on vocational programmes and include;

- Art and design studios and workshops
- Digital media centre
- Music and media facilities
- Performing arts spaces

- Hairdressing and beauty therapy training salons
- Professional catering training kitchens
- Engineering and motor vehicle centre
- Construction centre.

The **Advice Centre** is the point of contact for advice relating to a wide range of specialist support including;

- Advice on Reading College courses, applications and fees
- Visas and immigration issues
- Careers, further study, jobs and progression routes
- Work experience
- Sports and extracurricular activities
- Counselling
- Financial support
- Accommodation.



# Extracurricular Opportunities

## Get involved

We positively encourage our international students to take part in social and sporting activities. There are great benefits to be gained from mixing with other students outside the classroom. A number of activities are organised throughout the year so that our international students can meet up and make new friends.

Details of social events are displayed on international notice boards around the campus. There are also plenty of groups to join, such as the Psychology Club, Film Club, Debating Club and Multi-Faith Club and various sports activities to participate in. You can also get involved in broadcasting at the college's radio station.

The college also encourages students to participate in volunteering activities that let them use their time and talents to help others in the college and in the local community. Volunteering activities range from fund raising for charities to helping in local schools and to getting involved in local environment projects. Volunteering activities are a great way to mix with others and gain useful experience to help students become more employable in the future. Work experience opportunities are also available locally.



# Reading Town

Reading town centre offers excellent shopping and leisure facilities. It has one of the best shopping centres in the country. The Oracle offers not only a range of shops but also bars and restaurants as well as a multi-screen cinema. There are also plenty of arts and entertainment facilities within the town, with theatres and concert halls and, of course, the famous Reading Festival. For sports fans, there is the Madejski Stadium, home to Reading Football club and the London Irish premiership rugby club.

Take a river boat cruise on the famous River Thames, cycle through the lanes and many green spaces, or enjoy some of the local historical buildings.

Reading is situated on the edge of the North Wessex Downs, and Area of Outstanding Natural Beauty. It's the perfect base to begin exploring the green hills and the wildlife. There is a Mountain Bike club based in the local Chiltern Hills.

## Reading's international connections

Did you know that the town of Reading is twinned with Dusseldorf in Germany, Clonmel in Ireland, San Francisco Libre in Nicaragua and Speightstown in Barbados?



# Easy Access around the UK

Explore. Discover...

Reading is located in the very heart of England. From here, you will be ideally placed to explore many other sites of interest in the UK, and you can reach Paddington Station in central London by a high-speed rail link in just 25 minutes.

Complement your studies with day trips to the many attractions close to Reading. You can enjoy a taste of British Royalty when you visit the magnificent Windsor Castle, go back in time to ancient Britain with a trip to the iconic Stonehenge monument. There are also many beautiful National Trust properties, country parks and nature reserves nearby, and even a fun day to be had at the LegoLand Windsor theme park.



## Exploring the UK by train

There are regular rail links from Reading to major cities in the UK.

- Central London – 25 minutes
- Oxford – 30 minutes
- Winchester – 40 minutes
- Bristol – 1 hour
- Bath – 1 hour
- Birmingham – 1 hour 30 minutes
- Cardiff – 1 hour 40 minutes
- Cambridge – 2 hours
- Stratford-upon-Avon – 2 hours
- Manchester – 3 hours

### From the airports

From Reading, you can get direct services to both London Heathrow and London Gatwick Airports. The Gatwick Airport Express takes 1 hour 20 minutes, and a coach runs to Heathrow in 50 minutes.



# Studying in the UK

Every year, over half a million students come to study English in the UK – the birthplace of the English language. There is a centuries-old tradition of excellence and an innovative approach to teaching that makes an English education recognised and respected all over the world. Studying at Reading College allows you to explore the UK's fascinating heritage, have fun and gain recognised qualifications that are valued all over the world. Reading College is diverse and you'll meet people of many nationalities, sharing their backgrounds and discovering new perspectives.

### Students aged 16 to 18

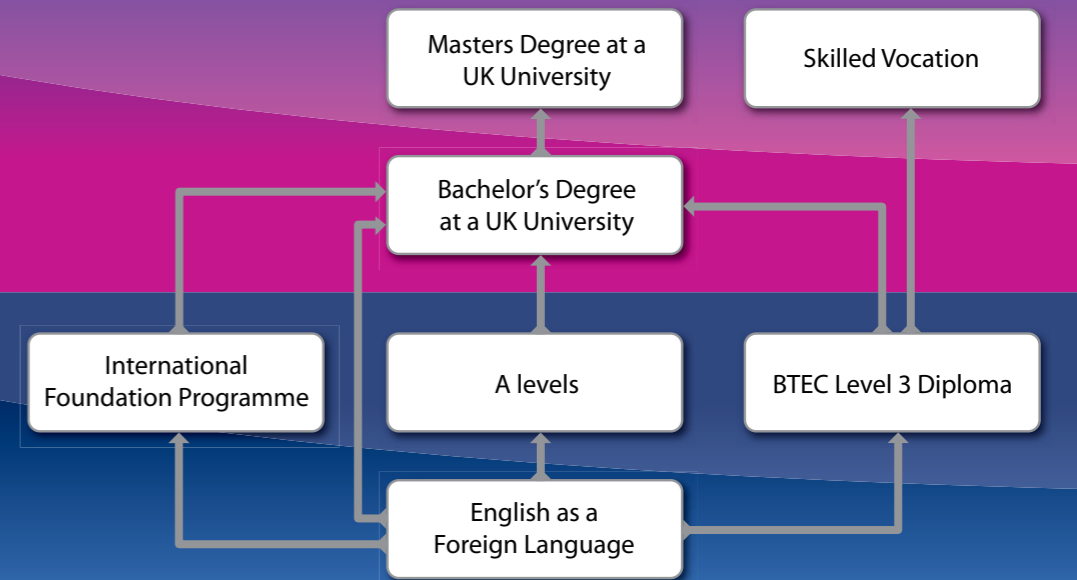
- At 16 years of age students in the UK sit GCSE (General Certificate of Secondary Education) examinations in about eight subjects including Maths and English. An alternative to GCSEs are vocational qualifications at Level 2 such as First Diplomas.
- GCSE students progress to A levels or a Level 3 Diploma course in a vocational area, eg IT or Business.
- A level and Level 3 Diploma students can progress on to university and degree level study, or take up a skilled vocation.

### International Students aged 17 years and older

For students aged 17 years or older who wish to progress to university in one year and improve their academic English skills, the ideal qualification is the one year International Foundation Programme.

## Where will it lead?

## At Reading College...



# English as a Foreign Language

## with Extra Vocational Studies

The college runs a wide range of English as a Foreign Language courses throughout the year. This course can help prepare you for academic study and for working and socialising in an English-speaking environment. You can study with us for one term or longer, with entry points in September, January and April.

### Who is this course for?

These English as a Foreign Language courses prepare students whose first language is not English for academic study at university and for working and socialising in an English-speaking environment.

### Where does the course lead?

Many students complete their English course with us and then join our International Foundation Programme for university. Others go on to study for a Bachelor's or Master's degree at a British university. You will be given good support to move on.

### Content and structure

Your course will comprise of 21 hours per week, consisting of:

15 hours per week of general and academic English.

This will include:

- English literature and culture studies

- English language studies
- computer-based language learning
- examination preparation (usually Cambridge ESOL exams, e.g. PET, FCE, IELTS, with certificates)

Three hours per week of extra vocational study, such as:

- Art and Design
- Business English
- Health Studies
- IELTS workshop
- Travel and Tourism

You will also have two afternoons of activities and regular tutorials with your personal tutor. Please note that the actual range of subjects depends on student numbers.

### Course educational and social activities

In addition to your studies, you will go on educational trips to the tourist sites, museums and galleries of cities like London, Bath and Oxford, and you will enjoy a range of social occasions including an international evening, when you can enjoy food from other countries. You will be very welcome at our busy international Language Club where students make many new friends.

### Tuition fees (excluding travel, transfers, accommodation, living costs or activities)\*

English as a Foreign Language:

Term Start Dates	Term End Dates	Number of weeks	Costs
Mon 9 Jan 2012	Fri 30 Mar 2012	12	£2,016
Mon 16 Apr 2012	Fri 29 Jun 2012	11	£1,848
Mon 10 Sep 2012	Fri 14 Dec 2012	14	£2,352

**\*Fees may be reduced for students from European Community Countries.**

### Anh Dao

I'm in Class 2 of the English as a Foreign Language English Plus classes. The teachers care about us and they make sure we are in the right level class. The books and materials we use are really interesting. I've come from Vietnam to get my English up to IELTS 6.0 before doing a degree in the UK. I'm really enjoying Reading College as I'm making good progress, and I can speak a lot with the students from other countries in the world that I've made friends with.

### Mshael Almlohai

It's very important to be able to speak and read English in Saudi Arabia so I'm happy I have come to England to study it. I'm especially glad I chose the English Plus course at Reading College from the internet as I enjoy lots of things about it like the interesting books we use and the teachers, who are really good teachers as well as being helpful and nice. I feel happy here.

### Reza Fouladband

I'm from Iran and I'd like to study for a degree in Engineering later. First I am doing an English Plus language course at Reading College then I'll stay at this college to do my A levels in Maths and Physics before going on to university. What I enjoy is that we have a friendly atmosphere and my teachers are very good.



# International English Summer School 2012

Our English Summer School gives you the opportunity to join a friendly English class at your level. You can study for a four week period in either July or August. Courses will start on 9 July and 6 August 2012

The maximum class size is 20 students but in most classes there are around 12 students.

## A warm welcome

On your first day at Reading College your teachers will show you and your new classmates around the campus to see facilities such as the library, the IT Suite and the refectory. They will also take everyone on a tour of Reading town centre.

## Course content

In the Summer School you will study intensive English in the morning (15 hours per week) and interactive and cultural activities in the afternoon, a full five day programme.

The classroom activities on our Summer School concentrate on developing your speaking and listening skills, and there are also many opportunities for improving reading and writing skills and developing your knowledge of vocabulary and grammar. Your teachers will help you and your classmates to speak, read, write and listen to English accurately. During the English lessons there will be opportunities to work in



pairs and groups, and to get to know students from different countries. Class activities are true to real life language needs. You will also learn about the culture of the UK and discuss world issues.

## Class magazine

All of the Summer School students contribute to a class magazine during their stay at the College. The magazine is a collection of students' work including short stories, articles, poems, recipes and photos, which forms a special personal record to take home.

## Social Programme

There is a full social programme with excursions to places such as London, Oxford, Bath, Windsor and Brighton.

## Assessment

At the application stage, we require evidence of your English language level to ensure that we have a class to suit you. On arrival, your level of English will be assessed so that you are placed in the right class. There will be a test based on your knowledge of vocabulary and grammar, a short writing test, and an interview to assess your speaking and listening skills.

## Entry requirements

If you are on a Tier 4 visa, your English will need to be at IELTS 4.0 in all 4 components (reading, writing, speaking and listening). You will need to provide proof of this, such as an IELTS certificate.

If you are on a student visitor visa, you can join a suitable class in our programme even if your level of English is below 4.0.

## Price: £1,700 for 4 weeks

The price includes accommodation with a host family and all tuition and trips during the week. The price excludes travel and transfer. Saturday trips will be extra. Individuals and groups can be accommodated.

For all enquiries and applications, see page 21.

## Sandhya Bhattarai

During the three years since I've arrived from Nepal, I feel as though I've achieved so much. The staff and students at the college have really helped me and I gained the highest possible grade of A\* in two of my A levels, plus two A grades. I never dreamed of getting such high grades and I'm now on track to go and study medicine once I've completed my AQA Baccalaureate. I've become involved in volunteering and this has helped me develop. The college has supported my voluntary work and I'm sure that helping at the local hospital and spending time with patients will help with my future career.

## Fang Chen

I'm from China and I'm going to study Business at university. First I need to get my English to a higher level, so it's great that at Reading College you can join their English as a Foreign Language English Plus course at a time of the year that suits you. I arrived here in April and the IELTS teaching is first class (I need 6.0!). I'm really pleased I chose Reading College as it's so near London and Oxford and other fantastic places, and we've done lots of trips to them as part of our study. I'm really enjoying the course as I've made good friends with international students from different countries, the teachers are always very helpful and I like the computing and library facilities.

# International Foundation Programme

The IFP will enable international students to apply to UK universities. You will gain the academic study skills necessary to be successful in applying for a range of Business or Health degrees.

The International Foundation Programme is a 16 hour programme which includes English and a choice of other subjects. You can study from September to July. You will have seven hours of Academic English per week and a choice of one of two pathways:  
Pathway 1: Nine hours of Health Studies and Human Biology  
Pathway 2: Nine hours of Business and IT  
Students are prepared for IELTS Level 6 and 7 for university entrance.

## Who is this course for?

This course is for students whose first language is not English and who are aiming to progress to university education in the UK. You will be studying alongside British students.

## Where does this course lead?

After successful completion of the International Foundation Programme, you will be ready to begin a Bachelor's degree at a UK university. We have links with universities, and our tutors and careers advisors will help you to make the best choice.

Recent students have progressed to courses including:

- Politics, University of Birmingham
- Law, School of Oriental and African Studies, University of London
- Management and Business Administration, University of Reading
- Business Studies with Human Resource Management, University of West London
- Business Management, Oxford Brookes University
- Nursing Oxford Brookes University
- Midwifery, Southampton University

## Course dates: one year programme

12 September 2011 to 29 June 2012  
Fees £5,900  
£5,500 (plus £95 exam fees)

10 September 2012 to 28 June 2013  
Fees £5,900 to be confirmed

**\*Fees may be reduced for students from European Community Countries.**



## DEISLAVA GANEVA

### What do you most enjoy about your course?

Being part of the college community. Through this course I've not only improved my knowledge and ability with the English language, but I have also enlarged my social circle.

### How will your course help prepare you for your future career?

I have a degree in law from an institution in Bulgaria, which will help me find a job here. However, to reach this goal, I need to be fluent; not only in my speaking, but in my writing as well.

### What kind of accommodation do you live in?

I live in a quiet and beautiful Lower Earley neighborhood in a semi-detached house with my family.

### What is it like living in Reading?

I like being in Reading, it is a lovely place to live. You can very easily get to London or Oxford. The transport is well organised, and you can easily get everywhere you want to go. In Reading town centre there are plenty of different kinds of restaurants, cafes and shops. You can easily end up spending a lot of money!

### Have you travelled to other places/ visited attractions in the UK?

A lot! I've been to Oxford several times, and Windsor. Stonehenge is such a magnificent place. Brighton has stunning scenery, as well as its Royal Pavilion, with lots of impressive room decoration. London, of course, is cosmopolitan and very crowded - I am glad I live in Reading, but have the opportunity to go to London when I like. I have been to the British Museum, the Natural History Museum, the Tower of London, but what I really like is to spend time in the parks. When I have the opportunity I go to the theatre, but I often do that in Reading at The Hexagon.

### Do you take part in any activities outside of your course?

I love cooking! I go swimming at the local swimming pool. I also like reading. I also want to start some voluntary work, because I think it is really worth it, and it gives something back to society.

### What has been the biggest surprise of the experience so far?

How friendly everyone is. How supportive and caring.

### What do you know now that you didn't know 6 months ago/one year ago?

Six months ago, when I started to learn English, I was only learning with my mind. After spending time at Reading College, I developed more of a feeling. Before I learned it only as a foreign language, but now, with this course, and living in England, I have really started to feel the language - which is very important.

### What would be your top tip to new international students?

Strive for your goals. Embrace every opportunity.

# A levels

Students aged 16 and over are welcome to apply for a place to study A levels with our Sixth Form. The Sixth Form offers 22 subjects to choose from, offering excellent preparation for degree-level studies, in particular within medicine, business and engineering. There are also English language support classes throughout the two year A level programme.

## A level study

A levels relate to academic subjects (and some work-related subjects) and focus on traditional study skills.

## A level subjects at Reading College:

- Accounting
- Art and Design
- Biology
- Business Studies
- Chemistry
- Critical Thinking
- Drama and Theatre Studies
- English Language and Literature
- English Literature
- Film Studies
- Further Mathematics
- Geography
- History
- ICT
- Law
- Mathematics
- Media Studies
- Philosophy
- Photography
- Physics
- Psychology
- Sociology



## Faris Toutounchian

Because I had studied in a different country's education system I opted for the Science Pathway, which covers a range of GCSE science subjects, as I want to go to medical school. I found the teachers really supportive and they quickly helped me feel part of the class. I enjoy that you are given more responsibility here. The staff are really encouraging and helped me get excellent grades. I'm now studying for my A levels and really enjoying my time here.

## Kavitha Elanganathan

My family arrived in the UK from Sri Lanka five years ago. The teachers at the college have really helped me with my studies and I've made some good friends at the college that have helped me settle in. The encouragement I've received has helped me develop and I've really benefited from the college's training and volunteer scheme and have become a student mentor and Red Cross volunteer. This has really helped me with my communication skills and I feel more confident. Last year I achieved C grades in my AS level subjects and A level Biology. I am now in my final year of A levels, studying A level Chemistry, A level Mathematics and the AQA Baccalaureate after which I plan to go to university next year. Recently Sandhya and I both received Diana Awards for our voluntary work which was a real honour.



## Structure

A levels are made up of two parts, the AS and the A2. Each part makes up 50 per cent of the overall A level grade. In the first year students normally take four AS subjects and in the second year they usually carry on with three subjects at A2 to gain the full A level qualification.

	Year 1		Year 2	Qualification
Subject 1	AS	+	A2	A level
Subject 2	AS	+	A2	A level
Subject 3	AS	+	A2	A level
Subject 4	AS		-	AS level

## Entry requirements

Home students need at least five GCSEs at grades A\*-C. Sometimes, you need a grade B or above at GCSE in a particular subject to take it at AS or A level. International students will need to demonstrate equivalent level qualifications and an IELTS score of 5.5.

## After A levels

A levels are the most popular entry route to university study in the UK, through there are other routes to university including Access courses and vocational qualifications. Success at A level study demonstrates that you have developed analytical, thinking and communication skills, as well as specific subject related knowledge, so good A levels are highly regarded by employers in the UK.

## Extended Project Qualification (EPQ)

In addition to your A level subjects, you can also develop your research skills by achieving an Extended Project Qualification (EPQ). This qualification is well regarded by universities as it provides you with an opportunity of studying in an area of your choice, whilst developing research skills. The EPQ is equivalent to an AS qualification and carries the same university points.

## Enrichment

Our A level students have plenty of enrichment opportunities and visit places of interest that related to their subjects. Student visits include: the Old Bailey Law Courts, the Houses of Parliament, the National Records Office, theatre trips, fieldwork trips and overseas visits to Venice and Berlin.

## Fees

Starting September 2011 £5,500 per year (includes exam fees)  
Starting September 2012 £5,775 per year (includes exam fees)

**\*Fees may be reduced for students from European Community Countries.**

# Vocational Qualifications

Many international students choose to study a vocational course and gain a head start in gaining employment in a particular industry.

As with other vocational qualifications, you study for these qualifications if you are interested in learning more about a particular sector or industry. They have been designed in collaboration with industry, so they can equip you with the skills and knowledge that employers are looking for.

## Vocational subjects available at Level 2 and Level 3 including

- Administration
- Business
- Care
- Catering and Hospitality
- Computing and IT
- Construction and the Built Environment
- Engineering
- Finance
- Hairdressing and Therapies
- Languages
- Media, Music and Performing Arts
- Motor Vehicle
- Public Services
- Sport
- Travel and Tourism
- Visual Arts

Academic English support is also available  
Entry Requirements: IELTS level 5.0

**Please refer to the full time prospectus and website for further details of courses and fees.**



# Support for Students

You will have a full induction programme on arrival to help you adjust to your life as a student in Reading.

Throughout your studies you will have regular tutorials with your individual tutor, and will receive career advice and support. We have good links with top universities and will be able to advise you on the best future pathway for you.

If, for whatever reason, something goes wrong, you can rely on a strong support network within the college.

At Reading College we'll do as much as we can to help you settle in and make the most of your studies. You'll discover an array of exciting experiences by studying in the UK - music, arts, people to meet, places to visit – the list is endless. You will be invited to join in with social activities to help you make new friends. Whichever course you choose, you can be sure of excellent tuition and personal attention.

For issues relating to course and career guidance, including applying to university, our Progression Advisors are available on a drop-in or booked appointment basis.

For issues relating to welfare and visas, our Information and Admissions Advisor for International will be happy to help you.



# Accommodation

For the duration of your stay in Reading, you will need to arrange somewhere to live. Reading College can help with your search for accommodation, answer any questions you may have, and advise you on the different options available.

## Host family

This accommodation is provided by local families who have been visited and approved. You should be provided with your own room and, in most cases, meals will be provided. Current rates are £145-160 per week.

## Rented accommodation

Most students seeking private rented accommodation opt to share a house with other students. Each resident has their own study-bedroom and all bathroom, kitchen and living-room areas are shared. Typical rents vary from £260 to £300 per calendar month.

## Room in resident owner's home

These may be slightly more expensive than renting a room in a shared house. Rents normally include utility bills. This is a more flexible arrangement, with a shorter notice period required if you wish to move out.

## Single households

This type of accommodation is usually sought by couples or families. Typical rents for a three-bedroom house in Reading are £850 - £1,100 per calendar month. A self-contained one-bedroom flat is likely to cost at least £650 per calendar month.

## Hotel Accommodation

We would advise that you only use hotel accommodation if your stay is less than three weeks or as a short-term solution until you find somewhere else to stay. Hotel prices vary greatly and can be an expensive option.

## Before you start your search...

To gain information regarding how to get the best from your accommodation, we strongly recommend you visit [www.direct.gov.uk](http://www.direct.gov.uk) and search for 'Student Accommodation'. This will give you more information about the accommodation types available, what you can expect from them, as well as information about deposit protection schemes and what to do if you encounter problems with your accommodation.

For more information contact:

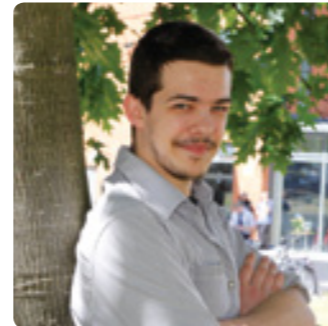
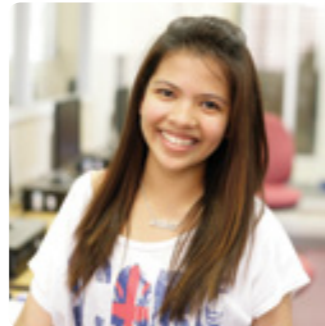
Cheryl Hinton, International Information and Admissions Advisor

e-mail: [international@reading-college.ac.uk](mailto:international@reading-college.ac.uk)

phone: +44 (0)118 955 4891

Or visit:

[www.reading-college.ac.uk/international](http://www.reading-college.ac.uk/international)



# Living in the UK

When you arrive in Reading, you will be given plenty of support with your accommodation, arranging health requirements, and setting up a bank account. However, here is some information it is useful to know before you get here.

## Cost of living

You will have to budget for the cost of living in the UK. You may need money for the following things:

- accommodation (the largest cost)
- utility bills
- council tax
- food
- books and equipment
- social life.

Some accommodation will include bills for utilities such as heating and electricity. However, if you choose to live in private accommodation, you may have to pay extra for gas, electricity and water.

Examples of the approximate price of food from the local supermarket:

- Loaf of bread - £1.00
- 1kg Rice - £0.98
- 1kg Potatoes - £1.37
- 400g Chicken fillet - £4.00
- 4 White fish fillets - £3.99
- 1 kg Frozen mixed vegetables - £1.00
- 2 Litres of milk - £1.20
- 1 Litre of fruit juice - £0.87

## Health

Reading College will give you all the support you need when dealing with any health issues during your stay, and will help you find a doctor. If you are studying for six months or more, you may be entitled to free or subsidised treatment under the National Health Service (NHS). Free emergency treatment may be available if you are here for less time. Remedies for minor illnesses such as colds or headaches are available from chemists and supermarkets. Further information can be found on the UKCISA website [www.ukcisa.org.uk](http://www.ukcisa.org.uk)

## Banking

You may want to set up a bank account in the UK. Different banks have certain requirements, which depend on your age, the length of your stay, and the amount of money you wish to transfer. Reading College can provide help and advice when setting up your account.

## Climate in the UK

People who live in the UK often like to talk about the weather! As the UK is an island, the weather is influenced by the surrounding ocean, and can change quickly, often many times in a day. It also varies from season to season, with freezing temperatures and snow in winter, to warm summer days where you only need a t-shirt.



# Enquiries and Applications

## How to apply for a study place

Please complete the application form (which you can download from our website [www.reading-college.ac.uk/international](http://www.reading-college.ac.uk/international)) and return it to us by fax, e-mail, courier or mail.

## Applicants for an English language course only

Please complete the application form AND the writing task (which you can download from our website) and return it to us by fax, e-mail, courier or mail.

If you intend to apply for a Tier 4 (General) Student you will need to provide a copy of your UKBA approved English language test (SELT) as evidence of your English language ability. You can download UKBA's list of SELT's from the UKBA website [www.ukba.homeoffice.gov.uk](http://www.ukba.homeoffice.gov.uk).

## Applicants for Further Education courses

Please return:

- the completed application form
- a copy of your school leaving certificate and transcript of results (with translations in English)
- a copy of your UKBA approved English language test (SELT) if you are not a national of a majority English-speaking country as defined by UKBA.
- IELTS certificate if you have one
- a testimonial from your school
- an essay of 350 words that you have written explaining why you wish to follow the study programme at Reading College.

## Art and design course portfolio

If you are applying for an art and design course, you will also need to send an art portfolio. Download the art portfolio form from our website.

You may send your documents by mail, courier, e-mail or fax, to Admissions, at the address below.

## Enquiries and Assistance

Please contact us if you would like some help in planning your personal statement, would like further information about a course, or have any other enquiries:

International Admissions Office  
Reading College  
Kings Road  
Reading  
Berkshire  
RG1 4HJ  
England

Telephone: +44 (0)118 955 4891

Agent enquiries: +44 (0)118 955 4650

e-mail: [international@reading-college.ac.uk](mailto:international@reading-college.ac.uk)



# Visa Information

The first thing to do before travelling to the UK to study is to check whether you need a visa. If you are a national of a country in the European Economic Area (EEA) or Switzerland, you do not need a visa to study at Reading College. The EEA consists of European Union countries, plus Iceland, Liechtenstein and Norway.

## Applying for a visa from outside the UK

If you are not an EEA or Swiss national, and you want to come to the UK as a student, it is compulsory for you to apply for entry clearance as a student. This will be under the rules for student visas, known as 'Tier 4'.

When applying for entry clearance, make sure you allow enough time for your application to be processed before you need to come to the UK.

## Student visitors and child visitors

If you want to come to the UK for a short visit (six months or less) and also want to study during that time (full-time or part-time), you should apply instead to come to the UK as a 'student visitor' or 'child visitor' (if under 18 years old). This type of visa is only suitable for people who want to study a course lasting no longer than six months.

Please note that from January 2011 UKBA introduced an extended (up to 11 months) student visitor visa for English language courses only. Entry clearance is compulsory. This extended route is available for a limited period and can be removed at any time.

If you come to the UK as a 'student visitor' or 'child visitor' you cannot apply to extend your stay in the UK as a Tier 4 student. You will have to return home and apply for entry clearance as a Tier 4 student.

As a 'student visitor' or 'child visitor' you will not be permitted to work (paid or unpaid as part of a course). Please visit the UK Borders Agency (UKBA) website for further information.

## Extending your visa from inside the UK

If you are already in the UK, but need to stay longer in order to complete your course or start a new course, you will need to make an application to extend your stay. You can only do this if you meet the Tier 4 immigration requirements.

## Further information

For full guidance on the current Tier 4 rules and requirements, and how to apply, please refer to the UK Borders Agency (UKBA) website and the UK Council for International Student Affairs (UKCISA) website for further information:

[www.ukba.homeoffice.gov.uk](http://www.ukba.homeoffice.gov.uk)

[www.ukcisa.org.uk](http://www.ukcisa.org.uk)

## International Information and Admissions Advisor

If you have any further concerns about your application, or whether you meet the requirements, then please contact:

Cheryl Hinton, International Information and Admissions Advisor

e-mail: [international@reading-college.ac.uk](mailto:international@reading-college.ac.uk)

phone: +44 (0)118 955 4891